



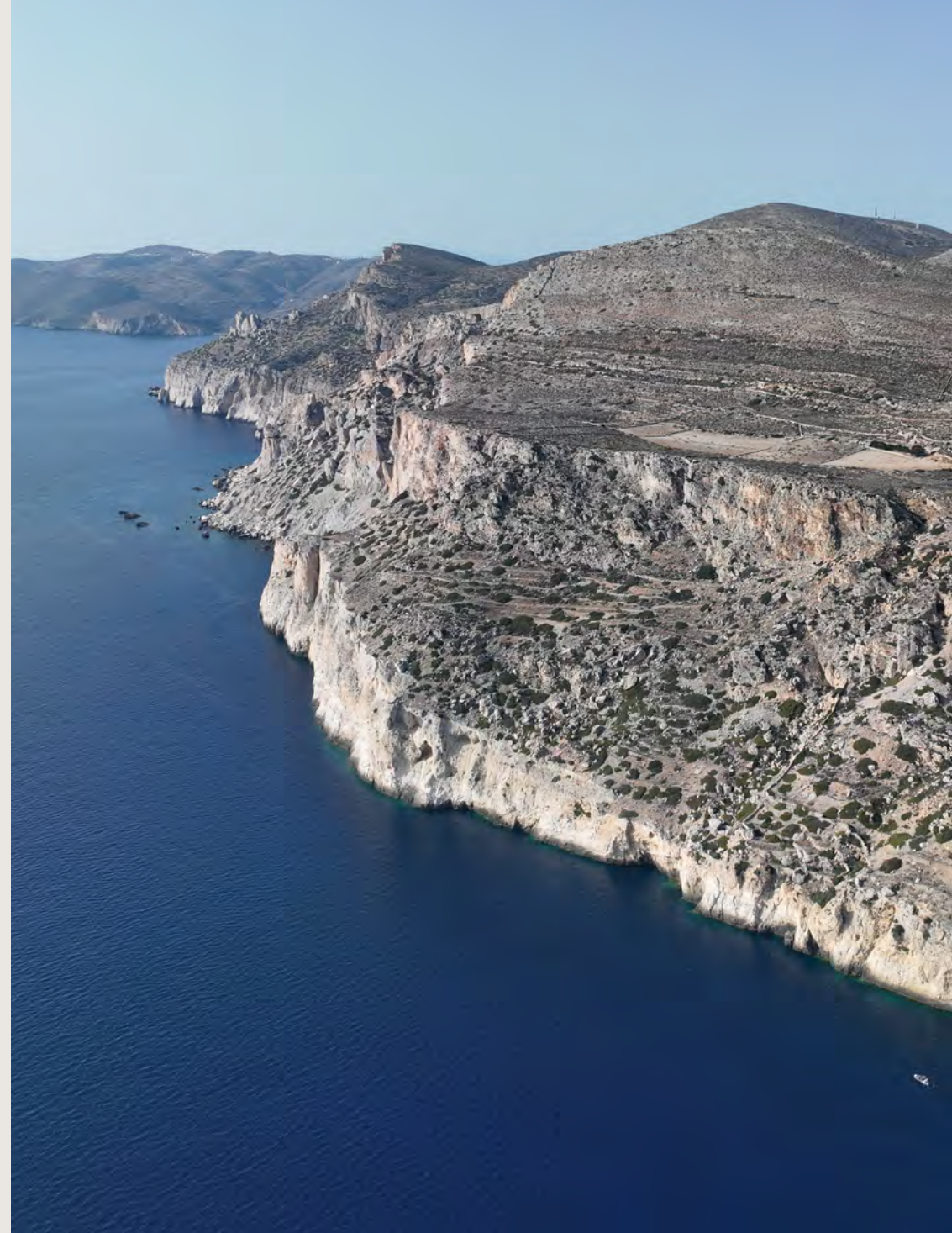
GUNDARI

FOLEGANDROS GREECE

www.gundari.com

RAW LUXURY

Gundari is a luxury resort wrapped in 80 acres of spectacular, raw nature on the secluded island of Folegandros.

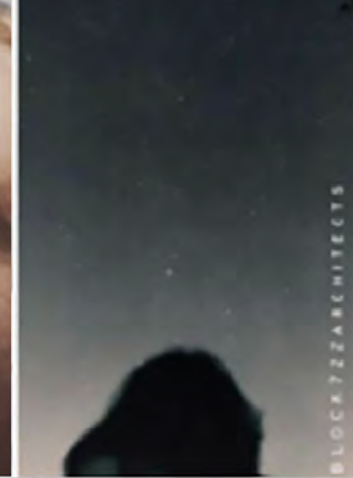






GUNDARI

RAW LUXURY



BLOCK722ARCHITECTS

LOCK722-011111

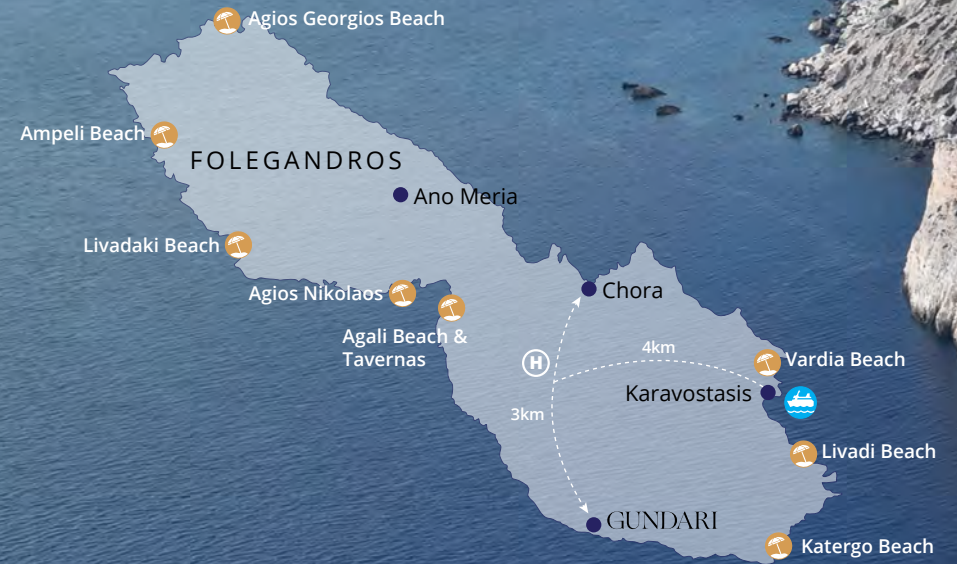






LUXURIOUS SECLUSION

Gundari is nestled on Folegandros' south-eastern coast, a stone's throw from the small village of Chora, the first agricultural settlement on the island. Conveniently close to Chora, yet far enough away to offer luxurious seclusion.



CHORA: 3.5 KM | 2.17 MI | 10 MIN

PORT/KARAVOSTASIS : 6.1 KM | 3.79 MI | 15 MIN



TRAVELLING TO FOLEGANDROS

From Athens by ferry : approx. 3.5 hrs

From Athens by helicopter: approx. 50 mins

From Milos by ferry/private boat: approx. 1 hr

From Santorini by ferry/private boat: approx. 1 hr

From Santorini by helicopter: 10 mins
(Flight from Athens to Santorini approx. 40 mins)

From Mykonos by ferry/private boat: approx. 3.5 hrs

From Mykonos by helicopter: 30 mins
(Flight from Athens to Mykonos approx.: 45 mins)

From Naxos by ferry/private boat: 4 hours

From Paros by ferry/private boat: 5 hours

Itineraries from nearby islands by boat or helicopter can be arranged.





Suites and Villas set high on soaring cliffs overlooking the azure depths of the Aegean Sea



GUNDARI

Designed to inspire and invigorate
with wellness, gastronomy &
sustainability at heart



Blending seamlessly into the landscape, Gundari takes its aesthetic cues from the ancient tones of the island itself with majestic views at every turn.



ACCOMMODATION

25 Suites & 2 Villas

- 12 Standard Suites
- 6 Junior Suites
- 2 Executive Cave Suites
 - Subterranean, bioclimatic design located on the cliff edge
- 2 Deluxe Cave Suites
 - Subterranean, bioclimatic design located on the cliff edge
- 3 Superior Cave Suites
 - Subterranean, bioclimatic design located on the cliff edge
- 1 Cliff Front 3 bedroom Villa
 - Can accommodate up to 8 guests (max 6 adults and 2 children)
- 1 Cliff Front 4 bedroom Villa
 - Can accommodate up to 10 guests (max 8 adults and 2 children)



STANDARD SUITE WITH OUTDOOR PRIVATE POOL AND SEA VIEW



STANDARD SUITE • INTERIOR: 32M2 / 344FT2 • EXTERIOR: 25M2 / 269FT2 • ACCOMODATES UP TO 3 GUESTS



STANDARD SUITE



JUNIOR SUITE WITH OUTDOOR PRIVATE POOL AND SEA VIEW



JUNIOR SUITE • INTERIOR: 32M2 / 344FT2 • EXTERIOR: 25M2 / 269FT2 • ACCOMODATES UP TO 2 GUESTS





EXECUTIVE CAVE SUITE WITH OUTDOOR PRIVATE POOL AND SEA VIEW



EXECUTIVE CAVE SUITE SUBTERRANEAN, BIOCLIMATIC DESIGN LOCATED ON THE CLIFF EDGE
• INTERIOR: 32M2 / 344FT2 • EXTERIOR: 25M2 / 269FT2 • ACCOMODATES UP TO 2 GUESTS



EXECUTIVE CAVE SUITE



DELUXE CAVE SUITE WITH OUTDOOR PRIVATE POOL AND SEA VIEW



DELUXE CAVE SUITE SUBTERRANEAN, BIOCLIMATIC DESIGN LOCATED ON THE CLIFF EDGE
• INTERIOR: 54M2 / 581FT2 • EXTERIOR: 60M2 / 645FT2 • ACCOMODATES UP TO 3 GUESTS



DELUXE CAVE SUITE



DELUXE CAVE SUITE



SUPERIOR CAVE SUITE WITH OUTDOOR PRIVATE POOL AND SEA VIEW



SUPERIOR CAVE SUITE SUBTERRANEAN, BIOCLIMATIC DESIGN LOCATED ON THE CLIFF EDGE
• INTERIOR: 70M2 / 753FT2 • EXTERIOR: 60M2 / 645FT2 • ACCOMODATES UP TO 3 GUESTS



SUPERIOR CAVE SUITE



SUPERIOR CAVE SUITE



CLIFF FRONT 3 BEDROOM VILLA WITH OUTDOOR PRIVATE POOL AND SEA VIEW



CLIFF FRONT 3 BEDROOM VILLA

• INTERIOR: 300M2 / 3229FT2 • EXTERIOR: 300M2 / 3229FT2 • ACCOMODATES UP TO 8 GUESTS



CLIFF FRONT 3 BEDROOM VILLA



CLIFF FRONT 3 BEDROOM VILLA



CLIFF FRONT 4 BEDROOM VILLA WITH OUTDOOR PRIVATE POOL AND SEA VIEW



CLIFF FRONT 4 BEDROOM VILLA • INTERIOR: 280M2 / 3013FT2 • EXTERIOR: 200M2 / 2152FT2 • ACCOMODATES UP TO 10 GUESTS



CLIFF FRONT 4 BEDROOM VILLA



CLIFF FRONT 4 BEDROOM VILLA



GASTRONOMY

Orizon restaurant offers a refined, contemporary Greek menu crafted by the renowned Michelin starred Chef Lefteris Lazarou, accompanied by the finest local and international wines.

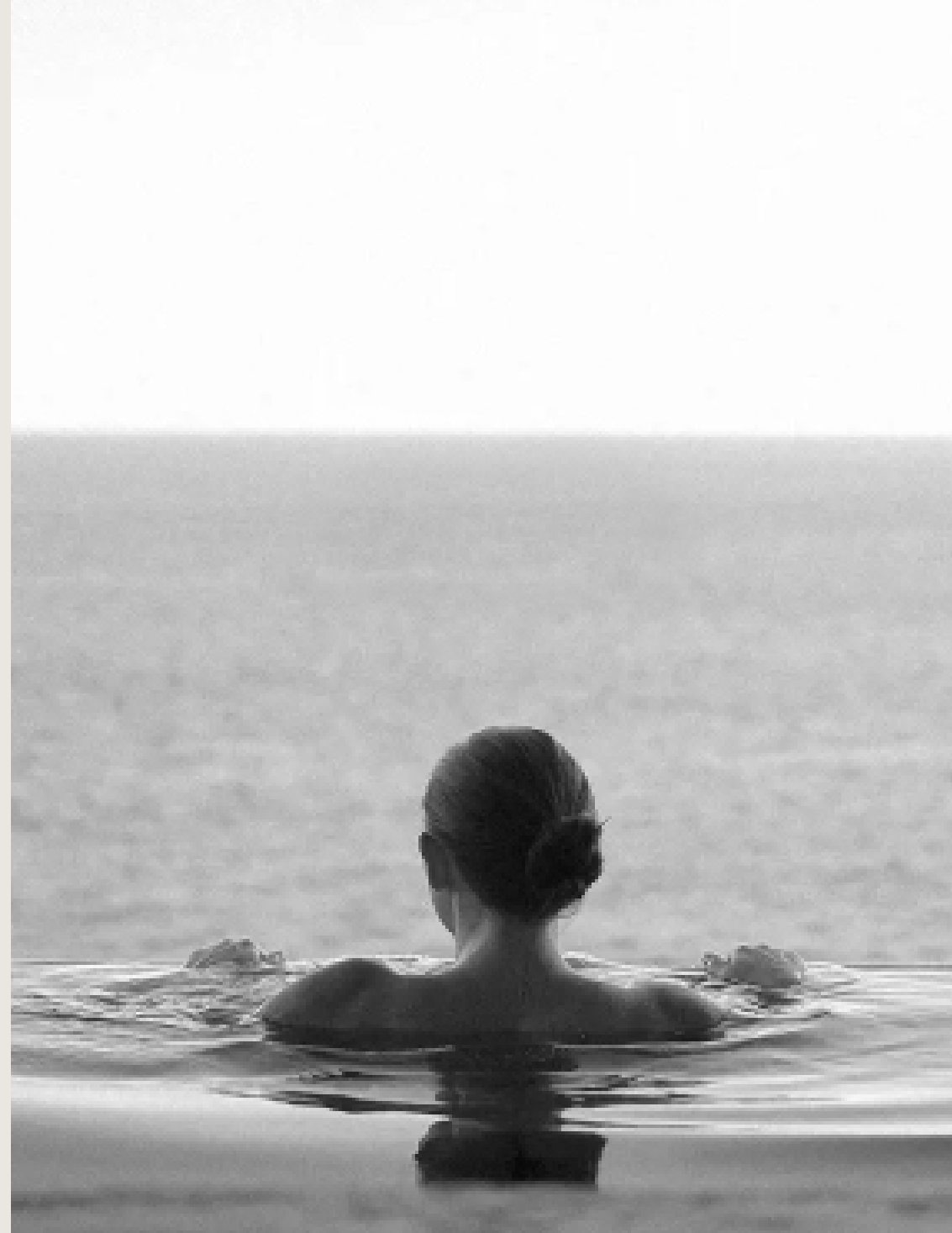


GUNDARI



WELLNESS

Subterranean spa set in an awe
inspiring location, hugging a dramatic
cliff surrounded by calming seas.



GUNDARI



GUNDARI





FACILITIES & SERVICES

- 24 hour Front Desk
- A la carte Breakfast
- 3 x Dining spaces
- Off site Gundari bar & restaurant at port beach with VIP guest services
- 2 x Bars
- Bell Boy Service
- Concierge Service
- Gym with interactive smart equipment
- Heated main pool with swim up cocktail bar
- Room Service
- Complimentary Transfer Service from/to port and heli-port



BATHERS BEACH HOUSE

Bathers Beach House is our Seafood Grill & Bar on pristine Chochlidia Beach. Gundari guests are offered towel service, and beachside all day dining. Guests enjoy complimentary shuttle service between Gundari and Bathers Beach House (10 minutes).



EXPERIENCES

A COLLECTION OF UNIQUE EXPERIENCES TO HELP GUESTS DISCOVER THE MAGIC OF FOLEGANDROS.

- Exploring hidden bays, stunning beaches and nearby islands on the Gundari luxury boat (Axopar XC 37)
- Diving and snorkelling in the caves, reefs and walls that surround Folegandros
- Guided hiking on ancient paths or historic tours through the island
- Discovering the island with our Electric bikes or EV Mini Moke vehicles
- Taking an authentic Greek cooking class and culinary tours



SUSTAINABILITY

THE GUNDARI COMMITMENT TO SUSTAINABILITY GOES BEYOND SIMPLY PRESERVING THE NATURAL BEAUTY OF OUR PRECIOUS ISLAND.

WE AIM TO REGENERATE AND KEEP IMPROVING THE ENVIRONMENT WE'VE INHERITED YEAR UPON YEAR. SOME OF OUR INITIATIVES INCLUDE:

- Carbon Monitoring & certification program through Earthcheck
- Bioclimatic building design, that maximises energy efficiency
- Renewable Solar energy for hot water and pool heating
- 100% electric vehicle fleet, with low carbon free emissions
- Working towards zero waste and no single-use plastics
- Smart centrally controlled energy systems and low light pollution design
- Biological waste water treatment and water recycling for irrigation
- Bird monitoring and conservation program from 2024 onward





GUNDARI

RAW LUXURY

Folegandros, 840 11, Cyclades, Greece

reservations@gundari.com

www.gundari.com